

## ***SELF-PROPELLED APPLICATORS***



**4103, 5105 & 7400**



## **4103, 5105 & 7400**

### ***HISTORY OF RELIABILITY***

Oxbo has been one of the leading distributors of application equipment for over two decades. As the distributor, manufacturer and supporter of our own Oxbo branded spreaders, we have the flexibility to take care of our customers and develop products based on their needs.

### ***OUR TEAM SEPARATES US***

Oxbo spreaders are backed by factory-direct parts and service. Our strategically located service centers and trained technicians are dedicated exclusively to Oxbo machines to assure you stay in the field.

### ***FLEXIBILITY IN DESIGN AND CHOICES***

Each customer has different needs and purposes for their operation. That's why Oxbo has flexibility in design and offers more choices to fit the needs of a wider range of customers. Oxbo has machines for both liquid and dry fertilizer applications. With the unique chassis design of our 4103 and 5105, we provide the most flexibility in application products. From the versatile 4103, 3-wheel chassis, to the multi-function 5105, Oxbo equips each machine with a variety of applicators for liquid or dry products and factory installed precision options from Ag

Leader or Raven. We have the ability to map the "As Applied" data for liquid and dry fertilizer applications.

### ***NEW FEATURES AND OPTIONS***

The 4103 and 5105 have added several new standard features and options to offer you more value and versatility in your purchase. Oxbo has four top level choices for the 4103 chassis including the AccuAir air boom system, AccuSpray liquid system, the combination system and two choices of New Leader boxes. Each system is built to the highest standards to accurately and evenly distribute your valuable fertilizer. Oxbo is excited to continue to develop and integrate features to both our three and five-wheeled chassis to create products as individual as your application needs. What continues to set Oxbo apart from other manufactures, is our ability to build products based on the needs of our customers.

### ***PROVEN PERFORMANCE***

Our original 7400 floater truck is coupled with a reliable International chassis and industry leading New Leader box. The Oxbo 3 and 5 wheel spreaders are rapidly becoming the application product of choice. The flexible designs offered and dedication to our customers are why more industry leaders are choosing Oxbo.



*4103 AccuAir air system*



*4103 New Leader*

The right spreader for any size application



*4103 AccuSpray liquid system*

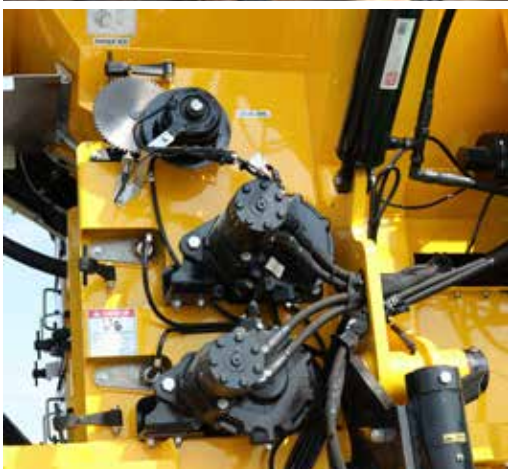


*4103 AccuApply combination unit*

# 4103 AccuAir

## PROVEN CHOICES FOR ACCURACY

Air-boom application is one of the most accurate methods to precisely apply products to your field. The 4103 air system applies a precise mixture of products with a combined capacity of 387 cu ft. With 3 product bins, you have an almost unlimited combination of blends at your fingertips.



## UNIQUELY DESIGNED AIR SYSTEM

- Specially designed for the Oxbo 4103 chassis
- Additional capacity front bin for total of 387 cu. ft.
- Heavy-duty 304 stainless boom with stainless diverters
- 72' spread pattern, 26-1/4" broadcast outlet spacing
- Hydraulic boom suspension with breakaway tips and hydraulic fold

## OPTIMAL CONTROL

- Chassis mounted tank has separate hoppers to precisely meter the products according to the needs of each section
- Better control of application rates, spread width and particle size for less waste and less environmental impact
- Three product reservoirs for variable bin ratio provide optimal mixing and distribution of granular product

## MULTIPLE UNIQUE FEATURES

- Grease bank system for the spreader system
- Hydraulically controlled end gate for easy clean out
- All stainless conveyors chains for more durability and less corrosion
- Integrated hydraulic cooling fan for greater efficiency
- Low bin level sensors on each bin to prevent running out of product - keeping your ratio accurate
- Micronutrient bin allows you to meter even the smallest amounts needed

## OTHER OPTIONAL FEATURES

- Auto-steer choice of Raven RS1 or Ag Leader SteerCommand
- Raven Viper 4+ precision display
- Ag Leader InCommand 1200 precision display

# 4103 AccuSpray

## ACCURATE APPLICATIONS

The NEW Oxbo 4103 with the liquid system promises to deliver fertilizer right to the source. The 2,600 gal. tank in the AccuSpray system is the largest in the industry. The large tank with the proven Millennium boom will help you get more done in a day.



## PANORAMIC, UNDISTURBED CAB VIEW

- Booms stow away for road travel giving an unobstructed view out the sides for safer road transport
- Comfortable, roomy cab makes long days enjoyable
- 2 position stow cradle allows for improved access in and out of the cab in the outer position, and a less than 12' machine width in the inner position



## STAINLESS STEEL TANK AND TUBES

- 2,600 gallon tank means less filling and more time applying
- 200 gallon rinse tank
- Baffles inside tank keep product stable for more secure loads
- Stainless steel product plumbing means less corrosion to sensitive plumbing



## OTHER FEATURES AND OPTIONS

- Center rack with mechanical dampening and sway control
- Optional eductor for easy mixing
- 4" front and side product fill ports equipped with fill line blow-out
- Side keypad to control sprayer fill functions
- Hand wash valves next to cab and at ground level
- Hypro 9308 product pump for better control of application rates, spread width and particle size means less waste and less environmental impact



## MILLENNIUM BOOM

- 90' aluminum boom
- 35 nozzles on 30" spacing with pneumatic pinch valves provides instant on & off at each nozzle
- Boom height range of 30" to 98"
- Optional Raven Ultraglide
- Optional Richway Versatrac foam marker system



# 4103 New Leader

## **FLEXIBILITY IN CHOICES**

With the 4103 chassis, you have several choices in New Leader boxes. Oxbo offers the 4500 G4, 15ft. box in 304 stainless or 409 painted stainless. NEW is the 5000 G5, 16 ft. box also available in 304 stainless or 409 painted stainless. You can also utilize the New Leader box with our exclusive AccuApply system.



## **RELIABLE REPUTATION**

- New Leader boxes are synonymous with quality, more manufacturers rely on New Leader than any other spreader box
- Stainless steel construction for less corrosion
- New Leader High Performance hydraulics come standard on Oxbo equipment

## **APPLY WITH CONFIDENCE**

- Stainless spinners with independent controls
- Automatic feedgate and fan frame control
- Boundary spreading puts product where you want it

## **BUILT-IN DURABILITY**

- Stainless steel connections
- 304 stainless feedgate, spinner jacks and handles for less worry about corrosion
- G5 has stainless steel cross tubes, mounts and take-up brackets
- Your choice of standard 15 ft. box OR the new Industry leading 16 foot option

## **PRECISION CHOICES**

- Equip your 4103 with auto-steer choice with Raven RS1 or Ag leader SteerCommand
- Raven Viper 4+ precision display
- Ag Leader InCommand 1200 precision display

# 4103 AccuApply

## MAXIMIZE YOUR RESOURCES

The NEW Oxbo 4103 AccuApply combination unit utilizes the Oxbo liquid system and a New Leader dry box to give you a combination unit capable of spreading both liquid and dry fertilizer to maximize your resources! A true three season applicator for pre-plant, post-emergent and post-harvest use.



## CHANGEOVER BETWEEN SYSTEMS

- Changes easily from one type to another **without** using a crane - disconnect and drive away!
- Common four-point mounting system between the liquid and dry systems
- Liquid system can be lifted with an optional set of jacks to eliminate using a crane and provides a storage system when the unit is not in use
- Built-in hose storage location for system not in use to prevent contamination to hydraulic circuit



## CONVENIENT FEATURES

- Standard fill valve on the AccuSpray to quickly fill 2,600 gal. tank on the liquid system
- Optional eductor for ease in filling
- Stainless steel plumbing



## MULTIPLE OPTIONS

- New Leader choice of 15' 304 stainless or 409 painted stainless or optional 16' in 304 stainless or 409 painted stainless, the largest spreader box in the industry
- All options available on both the AccuSpray and New Leader box are available in the combination unit



## IMPORTANT CHASSIS FEATURES

- One-piece frame for increased strength
- Exclusive - adjustable, powered front wheel
- 4-point cab suspension system
- Fuel efficient and powerful Scania DC09 engine
- Heavy duty rear axle and ZF Eccom CVT transmission

# 5105 Tebbe Box

## FIVE-WHEEL CHOICE

Oxbo has another option for spreading lime or other dry matter; the 5105 five-wheeled spreader equipped with a 27 ton capacity Tebbe box equipped with hydraulic beaters and spinners on separate drives for adjustable spread rates.



## COMFORTABLE, SPACIOUS CAB

- 4-point cab suspension; hydraulic front & rear airbag systems for the optimal ride
- Cab provides exceptional panoramic view of field
- Ergonomic design and Bluetooth ready radio stereo system



## FUEL EFFICIENT ENGINE

- Proven and time-tested Scania 6 cylinder 13L engine gives 550 peak horsepower
- Fuel-sipping capabilities without sacrificing power



## STEERING AND MANEUVERABILITY

- Steerable rear axles provide agility and maneuverability
- 70 degree turning allows you to turn around on back wheels
- Adjustable, powered front wheel



## 27 TON CAPACITY TEBBE BOX

- Equipped with hydraulic beaters and spinners on separate drives for adjustable spread times
- On-board weighing system



## HYDRAULIC REVERSING FAN

- Powerful, automatic reversing fan keeps system cool and clean
- Four coolers side-by-side in a sealed compartment



# 7400 Floater Truck

## RELIABLE AND EASY TO USE

The Oxbo 7400 floater has been a long-time Oxbo backed product. The International chassis and New Leader G4, 4000 dry box helped set the standard in application and dry material delivery



## RUGGED ENGINE AND TRANSMISSION

- Reliable, Cummins L9, 350 hp engine
- Allison 5-speed automatic with Meritor 2-range auxiliary transmission

## TOP OF THE LINE STANDARD FEATURES

- Equipped with Allaince 750/45R22.5 radials in the front and Goodyear Optitera 1000/50R25 radials in the rear
- Power steering for less operating fatigue
- Ag Leader 1200 variable rate controller with auto swath control

## NEW LEADER DRY BOX

- L40000 G4, 14 foot stainless box
- Consistent and accurate spread patterns up to 90 feet
- Variable rate capabilities

## PRECISION CHOICES

- Equip your Oxbo 7400 with your choice of Ag Leader or Raven guidance systems





Oxbo International  
100 Bean Street  
Clear Lake, WI 54005

Visit our website at  
[oxbo.com](http://oxbo.com)



**715.263.2112**

**800.628.6196**

## SPECIFICATIONS

	4103	5105
<b>Chassis Dimension</b>		
Length	31 ft. 8 in. (9.65 m)	36 ft (11.1 m)
Width	10 ft. 5 in. (3.18 m)	
Height	12ft. 5 in. (3.18 m)	
Wheelbase	20 ft. 3 in. (6.17 m)	27 ft. 6 in. (8.4 m)
Steering and turning diameter	70 degree front wheel steering	70 degree front wheel steering and rear wheel powered steering
<b>Tires</b>		
Front and Rear Tire Size	Michelin 1050/50 R32	
Rim	3 piece rim assembly	
<b>Engine</b>		
Engine	Scania DC09, Tier 4F	Scania DC13, Tier 4F
Displacement	5 cylinder, 9.3 L	6 cylinder, 13L
Alternator	150 amp, 24 volt	150 amp, 24 volt
Horsepower	400HP rated (294.2kW)	550HP rated (405kW)
Reversible Cooling Fan	Hydraulically driven	
<b>Drive Train</b>		
Transmission	ZF ECCOM 5.0 CVT (continuously variable)	
Front axle	Hydraulically driven with adjustable power	
Rear axle	Mechanically driven Kessler, D91 axle with Planetary end reduction	Mechanically driven Kessler, LT91 axle with Planetary end reduction. 2 steerable axles, mounted on a bogie
Speed range selector	Automatic range shifting	
Front wheel drive	Hydraulic drive, power adjustable in cab	
Max transport speed	40 mph ( 64.4km/h)	33 mph ( 53km/h) DNMS
<b>Capacities</b>		
Fuel tank	170 gal (650L)	
DEF tank	15 gal (60L)	
<b>Precision Options</b>		
Ag Leader	Ag Leader InCommand 1200 and SteerCommand	
Raven	Raven Viper 4+ and RS1	